

**J-ZOE DES GRANDES RAFALES**

2014-10-10 (F) LOF 106069/20209  
 Color: Fau. PBI.Env. / Qualifications: TR  
 Kennel



**TITAN** 2001-07-15 (M) LOI  
 LO01166881 (CH GQ, CH(IT)T) - BIANCO  
 ARANCIO MASCHERA CHIUSA E



Father  
**ARISTANI'S KANDAR** 2008-10-07 (M)  
 LOF 99670/15204 (TRGQ, CH GQ) - Fau.  
 PBI.Env.



**PETITE** 2002-01-08 (F) LOI  
 LO0231488 (Ch. Ital. Lav., Camp. Ripr.) -  
 BIANCO NERO CON TESTA NERA  
 MACCH



**RIBOT DELLA NOCE** 1995-04-25 (M)  
 LOI PT189608 (CHIT, CH GQ, CH(IT)T,  
 CH(IT)B) - BIANCO NERO MASCHERA  
 SIMMETRICA



**JAGA** 1998-02-20 (F) LOF 98137098 -  
 BIANCO NERO



**HARDY DU BOIS DES PERCHES**  
 1992-08-10 (M) LOF 69375 (CH IT) -  
 Fau. PBI.TLI.

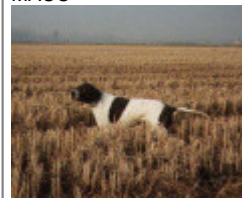


**KARINA** 1999-08-08 (F) LOI  
 LO0037019 (Ch. Ital. Lav.) - BIANCO  
 NERO TESTA NERA MACCHIA B

**CARIDDI DEL VENTO** 1987-11-22 (M)  
 LOI PT153233 (CHIT CHINT) - BIANCO  
 ARANCIO MASCHERA,ORECCHIE



**EDY** 1991-08-04 (F) LOI PT171935 -  
 BIANCO NERO MASCHERA GRANDI  
 MACC



**HARDY DU BOIS DES PERCHES**  
 1992-08-10 (M) LOF 69375 (CH IT) -  
 Fau. PBI.TLI.



**TESS** 1994-05-01 (F) LOI PT186111 -  
 BIANCO NERO MASCHERA  
 SIMMETRICA



**FAONA DES BUVEURS D'AIR**  
 1990-07-20 (F) LOF 64444/10164 -  
 Fau. PBI.Env.



**RIBOT DELLA NOCE** 1995-04-25 (M)  
 LOI PT189608 (CHIT, CH GQ, CH(IT)T,  
 CH(IT)B) - BIANCO NERO MASCHERA  
 SIMMETRICA



**INES** 1996-09-15 (F) LOI PT196686 -  
 BIANCO NERO TESTA MORA  
 MACCHIA N

CATHARIUM NINO 1997-05-06 (M)  
LOF 79208/11398 (CH P, CH GQ, TR) -  
Fau. PBI.Env.



RAFALE DE FONDJUAN 2000-07-22  
(F) LOF 85280/16298 (CH A, CH T, CH P,  
TR) - Fau. PBI.Env.



GADJO DE L'ISSA 1991-10-02 (M) LOF  
67670/9376 (TR) - Fau. PBI.Env.

HINDI 1992-05-05 (F) LOF  
68647/10877 - Fau. PBI.Env.

PITBULL DE COUCAREILLE  
1999-05-09 (M) LOF 83155/12141 -  
Fau. PBI.Env.

NIKITA DE FONDJUAN 1997-07-11 (F)  
LOF 79727/14609 (CH P) - Noi. PBI.Env.

HASTENSIS EROS 1984-09-25 (M)  
LOF 54555/5821 (CHQC, TR) - Fau.  
PBI.Env.

VIVA DE L'ISSA 1984-10-05 (F) LOF  
52894/7969 - Noi. PBI.TLi.

ELVIS DES LANDES DU PECH  
1989-09-07 (M) LOF 62313/8046 - Fau.  
PBI.Env.

DIVA DE SAINT GUILLEM DE LOSAC  
1988-05-10 (F) LOF 59405/8729 - Noi.  
PBI.Env.

GIPPO 1995-04-19 (M) (CH IB)

GEMMA DE SANJURI 1991-08-15 (F)  
LOF 77840/12868 - Fau. PBI.Env.

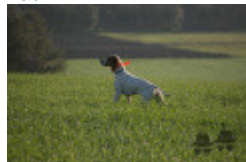
HASTRO DES BUVEURS D'AIR  
1992-09-14 (M) LOF 69385/9372 (CH A,  
CH GQ, CH CS, TR) - Fau. PBI.Env.



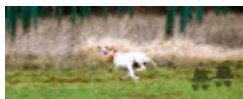
GWENDY DE FONDJUAN 1991-05-18  
(F) LOF 65946/13114 (TR) - Noi.  
PBI.Env.

Mother

COMETE DES GRANDES RAFALES  
2007-06-10 (F) LOF 95609/17676 (TR) -  
Fau. PBI.Env.



Breeder: FABRICE MUSCARI  
Cotation (FR): 1  
Chip : 250268500741217  
Italian breeding (estimated): 80%  
Points in pedigree: 53



Note: data are entered by members. There is no guarantee about accuracy of data.