

LUNA DE LA FORET DU MELU

2015-08-14 (F) LOF 107170/20404
Color: Noi. PBl.Env. / Qualifications: TR GQ
Kenel



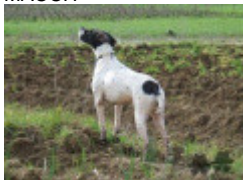
TITAN 2001-07-15 (M) LOI
LO01166881 (CH GQ, CH(IT)T) - BIANCO
ARANCIO MASCHERA CHIUSA E



Father
ARISTANI'S KLEMENT 2008-10-07 (M)
(CH(IT)T) - Noi. PBI.Env.



PETITE 2002-01-08 (F) LOI
LO0231488 (Ch. Ital. Lav., Camp. Ripr.) -
BIANCO NERO CON TESTA NERA
MACCH



RIBOT DELLA NOCE 1995-04-25 (M)
LOI PT189608 (CHIT, CH GQ, CH(IT)T,
CH(IT)B) - BIANCO NERO MASCHERA
SIMMETRICA



JAGA 1998-02-20 (F) LOF 98137098 -
BIANCO NERO



HARDY DU BOIS DES PERCHES
1992-08-10 (M) LOF 69375 (CH IT) -
Fau. PBI.TLi.

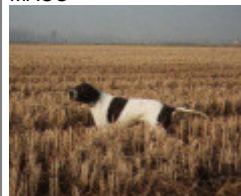


KARINA 1999-08-08 (F) LOI
LO0037019 (Ch. Ital. Lav.) - BIANCO
NERO TESTA NERA MACCHIA B

CARIDDI DEL VENTO 1987-11-22 (M)
LOI PT153233 (CHIT CHINT) - BIANCO
ARANCIO MASCHERA,ORECCHIE



EDY 1991-08-04 (F) LOI PT171935 -
BIANCO NERO MASCHERA GRANDI
MACC



HARDY DU BOIS DES PERCHES
1992-08-10 (M) LOF 69375 (CH IT) -
Fau. PBI.TLi.



TESS 1994-05-01 (F) LOI PT186111 -
BIANCO NERO MASCHERA
SIMMETRICA



TIBET DE LA LEMBAZ 1982-01-18 (M)
(CH IB, CHIT, CH GQ)



FAONA DES BUVEURS D'AIR
1990-07-20 (F) LOF 64444/10164 -
Fau. PBI.Env.



RIBOT DELLA NOCE 1995-04-25 (M)
LOI PT189608 (CHIT, CH GQ, CH(IT)T,
CH(IT)B) - BIANCO NERO MASCHERA
SIMMETRICA



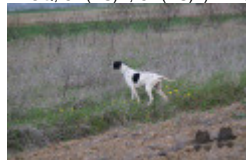
INES 1996-09-15 (F) LOI PT196686 -
BIANCO NERO TESTA MORA
MACCHIA N

KASTER 2004-06-07 (M) LOI 04107914
(CH(IT)T) - BIANCO NERO TESTA
NERA TRONCO PU



Mother

HUMEA DE LA FORET DU MELU
2012-08-01 (F) LOF 103232/19562 (TR,
TRGQ, CH(RS)B, CH(RS)T) - Noi. PBI.Env.



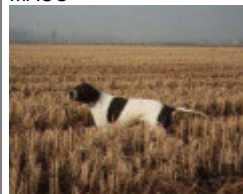
RIBOT DELLA NOCE 1995-04-25 (M)
LOI PT189608 (CHIT, CH GQ, CH(IT)T,
CH(IT)B) - BIANCO NERO MASCHERA
SIMMETRICA



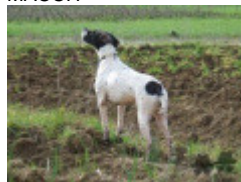
CARIDDI DEL VENTO 1987-11-22 (M)
LOI PT153233 (CHIT CHINT) - BIANCO
ARANCIO MASCHERA, ORECCHIE



EDY 1991-08-04 (F) LOI PT171935 -
BIANCO NERO MASCHERA GRANDI
MACC



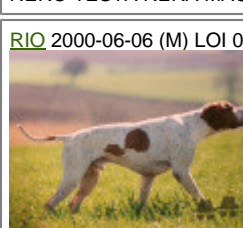
PETITE 2002-01-08 (F) LOI
LO0231488 (Ch. Ital. Lav., Camp. Ripr.) -
BIANCO NERO CON TESTA NERA
MACCH



HARDY DU BOIS DES PERCHES
1992-08-10 (M) LOF 69375 (CH IT) -
Fau. PBI.TLi.



KARINA 1999-08-08 (F) LOI
LO0037019 (Ch. Ital. Lav.) - BIANCO
NERO TESTA NERA MACCHIA B



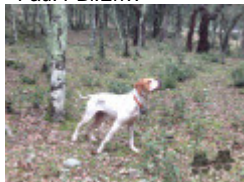
RIO 2000-06-06 (M) LOI 00115403



U.S.A D'ASPE ET D'OSSAU
2003-06-14 (M) LOF 89753/13637 -
Fau. PBI.Env.

SOOTY DE LANDA-GORI 2001-07-25
(F) LOF 86521/15901 - Noi. PBI.Env.

NABB BYE 2006-10-04 (F) LOF
94981/17502 (TR, CH A, CH P, TRGQ, CH T)
- Fau. PBI.Env.



UNA DE LANDA-GORI 2003-01-02 (F)
LOF 89030/16337 (TR, CH P, TRGQ) -
Fau. PBI.Env.



RIGO DE LANDA-GORI 2000-10-29
(M) LOF 85257/12888 - Fau. PBI.Env.



MONA LISA DE L'OREE DE
PERSEIGNE 1996-05-01 (F) LOF
77646/13606 - Fau. PBI.Env.

Breeder: CHARLES & ANTOINE GIOVANNONI / Owner: P. Ducher
ADN=compatible Mother.
Cotation (FR): 1
Chip : 250268731373440
DNA deposit
Italian breeding (estimated): 89%
Points in pedigree: 68

Estimated coefficient of inbreeding: 15.1 %

RIBOT DELLA NOCE (3,4 X 3,5,5) : 0.069260
PETITE (2 X 3) : 0.062500
HARDY DU BOIS DES PERCHES (3,4 X 4) : 0.007812
TIBET DE LA LEMBAZ (4,5 X 5,7,7,8) : 0.003662
FAONA DES BUVEURS D'AIR (4,5 X 5,6) : 0.002930
FAUNO DEL VENTO (6,6,7,8 X 6,8,8) : 0.000916
ESPERIA DEL VENTO (6,6,7,7,7 X 6,6,8,8,8,8) : 0.000732
BINGO DE LA VALLEE DU FREMUR (5,6 X 6,7,7) : 0.000732
ASTRA DU VIVIER DU FIEUX (5,6 X 6,7,7) : 0.000732
WHITEFIELD HESTER (6,7 X 7,7,8,8) : 0.000366
ASSO DEL VENTO (6,7,7 X 6,8,8) : 0.000366
MARCH DELLA CISA (6,7 X 7,8,8,8,8,8) : 0.000366
OLIMPIA DEL VENTO (7,7,8,8,8,8,8 X 7,7,8) : 0.000153
SERNOS DEL BOCIA (7,7,8,8 X 7,8) : 0.000061
UGANDA DEL VENTO (7,7,8,8 X 7,8) : 0.000061
CHIM (8 X 8) : 0.000031
EDO DELL'AZOR (8,8 X 8) : 0.000031



Note: data are entered by members. There is no guarantee about accuracy of data.