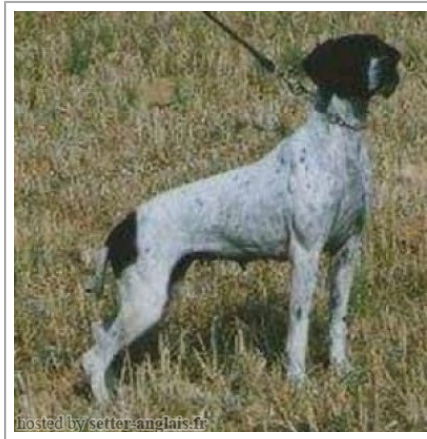





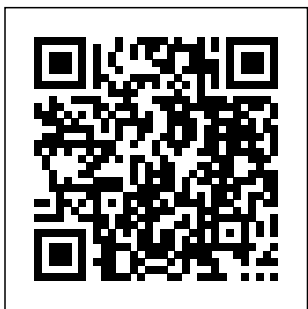


**DANA DE LA PALMOSA**

(F) BEK 16374  
[fiche affixe](#)



|   |   |   |   |
|---|---|---|---|
| Père<br><a href="#">MONDO PSIHARIS VENTUS</a><br>(M)<br>LOF 5467          | <a href="#">ARDITO DEL VENTO</a> 1989-01-04 (M)<br>LOI PT160123 (CH, Camp. Ripr.) -<br>BIANCO NERO TESTA QUASI NERA<br>GRA<br> | <a href="#">FAUNO DEL VENTO</a> 1977-05-13 (M)<br>LOI PT073141 (Camp. Ripr.) - BIANCO<br>NERO TESTA QUASI COMPLETA<br> |  <a href="#">SERNOS DEL BOCIA</a><br>1967-07-16 (M) LOI<br>PT007177 (CH T) -<br>BIAICO ARANCIO                               |
|   | inconnu   | inconnu   |  <a href="#">UGANDA DEL VENTO</a><br>1975-03-30 (F) LOI<br>PT057872  |
| Mère<br><a href="#">ANTEA DEL VENTO</a><br>(F)<br>BEK 13035               | <a href="#">IRA VON DER POSTSCHWAIGE</a> (F)  | inconnu   | inconnu   |
|   | inconnu   | inconnu   |  <a href="#">ESPERIA DEL VENTO</a> 1977-05-18<br>(F) LOI PT073795<br>(Camp. Ripr.) - BIANCO<br>NERA TESTA QUASI<br>COMPLET. |
| Sang italien (estimation) : 25 %<br>Estimation des points au pédigrée : 6 | inconnu   | inconnu   | inconnu   |
|   | inconnu   | inconnu   | inconnu   |





Note : les données ne sont pas garanties. Elles ont été entrées par les membres sans garantie d'exactitude.