










**ITUR DE CASAS DEL MONTE dit PATAS**

2021-05-23 (M) LOE 2587339  
 Couleur : Noi.Mar.Fau.  
[fiche affixe](#)



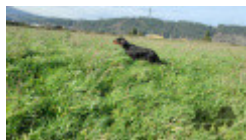
<p>Père  <a href="#">ALTZAGA BACHLACH</a> llamada  <a href="#">ROLO</a>          2018-03-02 (M)          LOE 2409924          (Tr. Pr TR. C.P. DE MONTAÑA) HD-B          - Noi.Mar.Fau.</p> 	<p><a href="#">CARNOCKMOOR TEASEL</a> llamada  <a href="#">JOCKER</a> 2015-06-28 (M) LOE          2305364 (Tr. montaña) HD-B -          Noi.Mar.Fau.</p> 	<p><a href="#">ZETTERTJARNS OPTIMAL OF          ENSAY</a> (M) 2185CY (FT CH) -          Noi.Mar.Fau.</p> 	<p><a href="#">ZETTERTJARNS          KAZAN AF          RENSJON</a> (M)          SKKS46632/200 -          Noi.Mar.Fau.</p>
	<p><a href="#">ALTZAGA AILLEN</a> (F) LOE 1794587 -          Noi.Mar.Fau.</p> 	<p><a href="#">CARNOCKMOOR WOOD LARK</a> (F)          AL05083108 - Noi.Mar.Fau.</p>	<p><a href="#">ZETTERTJARNS JARNS SHE</a> (F)          LOE SKKS20732/2004 - Noi.Mar.Fau.</p>
	<p><a href="#">ALTZAGA DEAMAHAN</a> (M) LOE -          Noi.Mar.Fau.</p>	<p><a href="#">CARNOKMOOR          PICKEREL</a> (F)          AE02431504 -          Noi.Mar.Fau.PBI.TLi.</p> 	<p><a href="#">ALTZAGA JOCK-SCOTT</a> (M) LOE</p>
	<p><a href="#">ALTZAGA DLEASNACH</a> (F) LOE</p>	<p><a href="#">GAWCOTT BLACK NYMPH</a> (F)          Z3858602Z04 - Noi.Mar.Fau.</p>	<p><a href="#">ALTZAGA AIGHEANNACH</a> (M) LOE</p>
		<p><a href="#">ALTZAGA INBHIR-NIS</a> (F) LOE          1050490</p>	

<p>Mère</p> <p><u>IGA DES RIVES DE L'ILDUT</u> 2013-03-19 (F) LOF 42756 - Noi. Mar.Fau.</p>	<p><u>BASILE DU CLOS DE LA CAPITAINE</u> (M) LOF 36877 (CH.T. -CHP -TR -CHITF -CHA) HD-A - Noi. Mar.Fau.</p> 	<p><u>NERAC DU GRAND VALY</u> 1997-03-06 (M) LOF 29048/5169 (TR, CHFGT, CH P, CH T, CH A, CH IT, CH T, VVOF/FTA) HD-A - Noi. Mar.Fau.</p> 	<p><u>NIKE DU GRAND VALY</u> (M) LOF 26057/4498 (CHAMPION -CHA -CH.T. -CHP -TR) HD-A - Noi. Mar.Fau.</p> 
	<p><u>UMA DU CLOS DE LA CAPITAINE</u> (F) LOF 34109/6940 (TR -CHP -CHITF -CH.T. -CHA -VVOF/FTA) HD-A - Noi. Mar.Fau.</p>	<p><u>NEMO VOM EIXELBERG</u> 1999-11-04 (M) DPSZ201/99 (CHCS -CHA -CHITF -CHIB -CH.T. -TRCHDE.B) HD-A</p> 	<p><u>MOUFFLETTE DE LA TOUNDRA DES TERRES FROIDES</u> (F) LOF 28567/5713 (CHCS) HD-B - Noi. Mar.Fau.</p> 
<p><u>DIWANE DES HAUTES COIFFES</u> 2008-09-15 (F) LOF 38946 (TR) HD-A - Noi. Mar.Fau.</p>	<p><u>POATR DE PEN BUTUN</u> (M) LOF 30758/5452 (Trialer) HD-A - Noi. Mar.Fau. PBI.TLi.</p> 	<p><u>LOOK DU BUISSON AU CERF</u> (F) LOF 27234/5484 (CHAMPION -TR -TR) HD-A - Noi. Mar.Fau.</p> 	<p><u>NOUBA DU GRAND VALY</u> (M) LOF 29281/5355 (CHAMPION -CHA -CHITF -TR) HD-A - Noi. Mar.Fau.</p> 
	<p><u>VAHINE</u> (F) LOF 35230/7217 (CHAMPION -P -CR 2007 -T -A) HD-A - Noi. Mar.Fau.</p> 	<p><u>MESSANE DU GRAND VALY</u> (F) LOF 28820/6727 (CHA -CHITF -TR) HD-A - Noi. Mar.Fau.</p>	

Propriétaire : Alberto Gutiérrez (653774255, altzagalloberoscasasdelmonte@gmail.com)

Sang italien (estimation) : 3 %

Estimation des points au pédigrée : 21



Note : les données ne sont pas garanties. Elles ont été entrées par les membres sans garantie d'exactitude.

